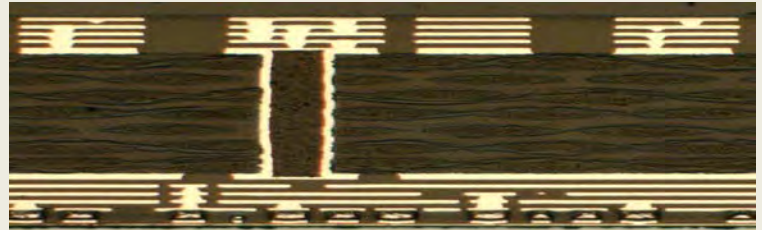


LEARN ABOUT INTEGRATED POWER MANAGEMENT WITHIN HASWELL PROCESSORS

March 2017. LTEC Corporation released its technical analysis report of the inductor structures used within the **Intel® Core™ i-4430** (Haswell) processor.



Top view



PCB cross-section

This fifty-three page report reveals construction details of the power inductors used within the Haswell processor. It also offers basic information about the power stages within the fully integrated voltage regulator (FIVR).

Table of Contents

	Page
Abstract	2
General Specifications	4
Package Overview	5-7
Die Image	8
Layer images	9 - 13
Inductor Connection Analysis	14 - 45
Output Transistor Analysis	46 - 53

Sales price : \$999

Note: The listed report price may not be accurate as it decreases over time.

Please contact us for current report pricing : info@ltecusa.com

14 H076_F