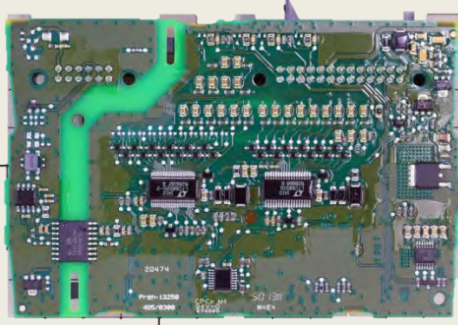
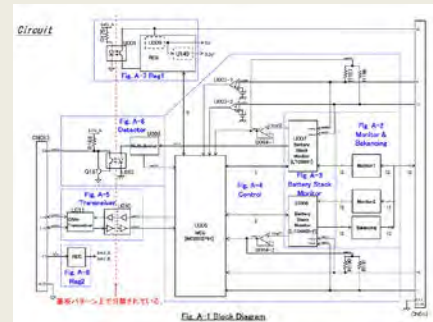


## LEARN ABOUT THE BMW i3 HEV Car BATTERY MANAGEMENT SYSTEM THROUGH THE TECHNICAL ANALYSIS

**March 15, 2015.** LTEC Corporation released its technical analysis report of BMW's i3 battery management system.



**PCB (TOP View)**



**Circuit diagram**

This fifty-page report reveals the PCB layout, BOM, and circuit schematic diagram. The battery voltage monitoring circuit, cell balance circuit, communication path, component values, PCB layout rules, and many more items are included.

### Table of Contents

	<b>Page</b>
Abstract	4
BOM	5
PCB pattern (x-ray, each layer image)	8 - 13
Main component	14 - 18
Block diagram	19 - 20
Circuit diagram	21- 31
PCB Pattern (width, thickness, separation, via)	32- 53

**Priced to sell at \$6,000.00**

Note: The listed report price may not be accurate as it decreases over time.

Please contact us for current report pricing. [info@ltecusa.com](mailto:info@ltecusa.com)

14G-0019-1