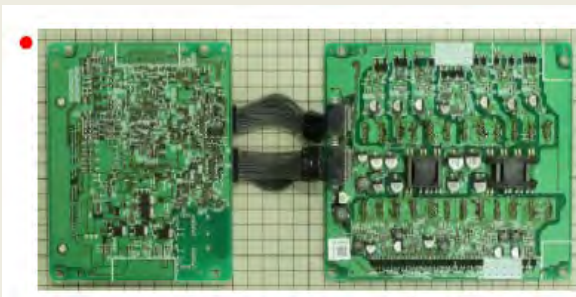


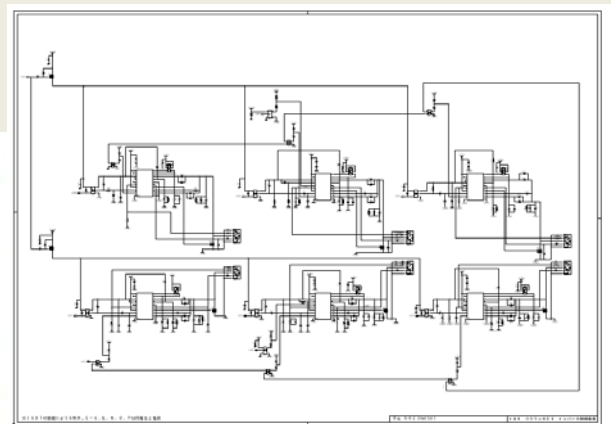
## TOYOTA CROWN HIGH\_VOLTAGE INVERTER CONTROL SYSTEM TECHNICAL ANALYSIS

LTEC Corporation released its technical analysis report of the **TOYOTA Crown** high voltage inverter control system.



**MCU board**

**Pre-drive board**



**Circuit diagram**

This seventy-page report reveals PCB layout, BOM, components and circuit PCB pattern, components' sizes, control circuit, and each component value.

### Table of Contents

	Page
Abstract	3
PCB appearance (OM, X-ray image)	4 - 9
PCB pattern (each layer image)	10 - 14
Components appearance	15 - 19
Block diagram, circuit diagram	20 - 32

**Priced to sell at \$19,500**

**Note:**

The listed report price may not be accurate as it decreases over time.

Please contact us for current report pricing [info@ltecusa.com](mailto:info@ltecusa.com)

14H-0129-1