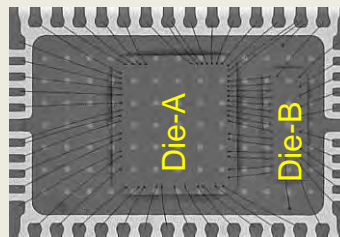


LTC6811 MULTI-CELL BATTERY MONITOR LSI FOR EVs AND HEVs DETAILED STRUCTURE ANALYSIS REPORT

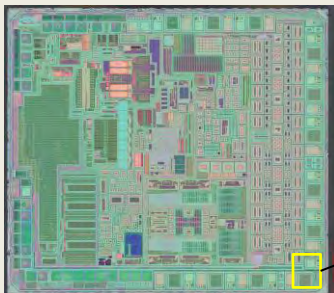
May 30, 2016. LTEC Corporation released a detailed structure analysis report of the LTC6811 multi-cell battery monitor LSI developed by Liner Technology Corporation. According to the company, the LTC6811 is a pin-compatible upgrade of the LTC6804, realizing dramatic cost-saving (for details refer to the report). This device has many advanced features.



Package (Top view)



Package (X-ray))



Gate layer image (Die-A)



Die marking (Die-A)

Just as the LTC6804, the LTC6811 has two dies built in one package. Die A chip size was drastically reduced (refer to the report for details). This report focuses on a detailed structure analysis of Die A. Since die B is unchanged, it is only briefly described in this report. A comparison with the LTC6804 is also included and the differences between the two products are highlighted.

LTEC Corporation is also planning to conduct detailed circuit analysis of LTC6811.

LTC6804 detailed circuit analysis report is currently available for sale.

Sales price: \$6,000

Note:

The listed report price may not be accurate as it decreases over time.

Please contact us for current report pricing info@ltecusa.com

16L-0003-1

Table of Contents

	Page
1. Summary	----- 3
2. Device Overview	
2-1. Package	----- 5
2-2. Package X-Ray	----- 6
2-3. Die Photograph (Die-A)	----- 7
2-4. Die Photograph (Die-B)	----- 12
3. Structural Analysis	
3-1. SEM cross-section (Logic)	----- 13
4. Functional Layout Analysis	
4-1. Pin Assignment	----- 17
4-2. Function Blocks	----- 19
4-3. Logic	----- 20
4-4. Analog Section	----- 22
5. LTC6811 vs. LTC6804	
5-1. Summary	----- 30
5-2. Device Comparison	----- 32
5-3. Functional Comparison	----- 33
5-4. Logic Comparison	----- 34
5-5. ADC Comparison	----- 35

16L-0003-1

