

MURATA LXDC2HL18A DC-DC MODULE ANALYSIS REPORT

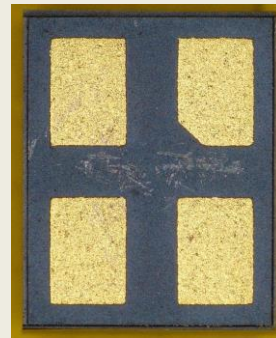
February 2018. . LTEC Corporation released a structure analysis report of Murata DC-DC module (LXDC2HL18A). This module includes the controller IC, output capacitor and inductor pre-assembled into a single miniature module. The main benefit of this module is the small footprint, thus suitable for space-constrained applications. The module consists of the inductor by using substrate layout patterns.



Side view



Top view



Bottom view

Device features:

- Input voltage: 2.5V-5.5V, Output voltage: 1.8V, Output current: 600mA
- Package size: 2.0mmx2.5mm

The 11-page report includes package images, size measurement, X-ray images, each layers of substrate, inductor material analysis, inductor schematic and size measurement results.

Sales price : \$800.00

Note: The listed report price may not be accurate as it decreases over time.

Please contact us for current report pricing : info@ltecusa.com

17G-0025-1

Table of Contents

	Page
I. Structure Analysis	
1. Device summary, Table 1, Executive Summary	3
2.0. Package overview	4
2.1. X-ray observation	
2.2. Package overview	
3.0. Substrate layout analysis	7
4.0. Cross section analysis	8
5.0. Material analysis	9
6.0. Equivalent schematic	10
7.0. Inductor size measurement	11

