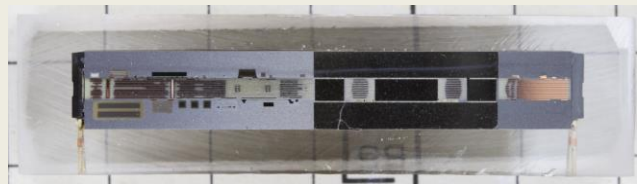


## **Vicor DCM290P138T600A40 DC-DC CONVERTER MODULE STRUCTURE ANALYSIS**

**June, 2018.** LTEC Corporation released a structure analysis report of Vicor DC-DC module (DCM290P138T600A40). This module includes controller, associated passive components, and an isolating transformer. The module consists the transformer is formed by twelve layers of the substrate.



**Module top view**



**Cross section image**

Key device features:

- Input voltage: 160V-420V, Output voltage: 13.8V, Output current: 43.5A
- Module size : 48mmx23mm
- DC isolation voltage: 4,242V

The 14-page report includes package images including size measurements, cross section details and transformer material analysis. The cross section reveals the construction details of the transformer.

**Priced to sell at \$1,000**

**Note:**

The listed report price may not be accurate as it decreases over time.

Please contact us for current report pricing [info@ltecusa.com](mailto:info@ltecusa.com)

18G-000C-1

# Table of Contents

	<b>Page</b>
1. Analysis summary	3
2. Product over view	4
3. Cross section details	5
4. Material analysis	14

18G-000C-1



LTEC Corporation US Representative Office  
No.203 2880 Zanker Road San Jose, CA 95034

Phone: (408) 489-1994  
www.ltecusa.com Contact: info@ltecusa.com